



Isolation of mononuclear cells

Methodology and applications



Handbooks from GE Healthcare



GST Gene Fusion System

Handbook
18-1157-58

Affinity Chromatography

Principles and Methods
18-1022-29

Antibody Purification

Handbook
18-1037-46

Cell Separation Media

Methodology and applications
18-1115-69

Isolation of mononuclear cells

Methodology and applications
18-1152-69

Ion Exchange Chromatography & Chromatofocusing

Principles and Methods
11-0004-21

Purifying Challenging Proteins

Principles and Methods
28-9095-31

Gel Filtration

Principles and Methods
18-1022-18

Recombinant Protein Purification Handbook

Principles and Methods
18-1142-75

Protein Purification

Handbook
18-1132-29

Hydrophobic Interaction and Reversed Phase Chromatography

Principles and Methods
11-0012-69

2-D Electrophoresis using immobilized pH gradients

Principles and Methods
80-6429-60

Microcarrier Cell Culture

Principles and Methods
18-1140-62

Isolation of mononuclear cells

Methodology and applications

Content

Introduction	5
Ficoll-Paque PLUS	6
The separation principle	6
A recommended standard method	7
Equipment and solutions required	8
Preparation of the sample	8
Procedure for isolation of lymphocytes	8
Washing lymphocytes free of platelets	10
Typical results from our laboratories	10
Notes	11
Troubleshooting inadequate performance	12
Properties of lymphocytes isolated by the Ficoll-Paque PLUS method	13
Further applications of Ficoll-Paque PLUS	13
Availability and storage	14
ISO 13485:2003 and GMP compliant	
Ficoll-Paque PREMIUM	15
Applications	15
Specifications	16
Availability and storage	16
References	17
Ordering Information	21
Selected products for cell science from GE Healthcare	21

Introduction

Ficoll-Paque™ PLUS (see page 6) is a sterile, ready to use density gradient medium for purifying lymphocytes in high yield and purity from small or large volumes of human peripheral blood, using a simple and rapid centrifugation procedure based on the method developed by Bøyum (1). Ficoll-Paque PLUS can also be used to prepare purified lymphocytes from sources other than human peripheral blood.

Ficoll-Paque PLUS from GE Healthcare is:

- A sterile endotoxin tested (< 0.12 EU/ml) solution of Ficoll™ PM400 and sodium diatrizoate with a density of 1.077 ± 0.001 g/ml.
- Recommended for small- or large-scale isolation of viable lymphocytes in high yield from whole human peripheral blood.
- Subjected to rigorous quality control testing, which guarantees reproducible performance from batch to batch.
- Supplied in bottles sealed with a rubber septum closure, which facilitates aseptic withdrawal of solution.
- Available in convenient pack sizes: 6×100 ml for research requirements and 6×500 ml for daily routine lymphocyte isolation. Detailed instructions for use are included with each pack.
- Stable for at least 3 y when stored at 4 to 30°C and protected from light.

Separation of normal whole human peripheral blood by the procedure recommended in this booklet typically yields a lymphocyte preparation with:

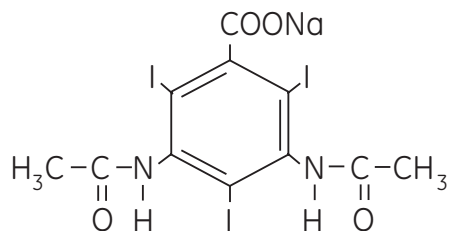
- $60 \pm 20\%$ recovery of the lymphocytes present in the original blood sample
- $95 \pm 5\%$ mononuclear cells
- $> 90\%$ viability of the separated cells
- $3 \pm 2\%$ granulocytes
- $5 \pm 2\%$ erythrocytes
- $< 0.5\%$ of the total platelet content of the original blood sample

In October 2005, GE Healthcare launched Ficoll-Paque PREMIUM. This product (see page 15) is based on Ficoll-Paque PLUS but is manufactured in a GMP compliant environment (37), certified to ISO 13485:2003 standard, and is intended for clinical applications. Ficoll-Paque PREMIUM can be incorporated into existing procedures where Ficoll-Paque PLUS is used, enabling the isolation of human mononuclear cells from bone marrow, peripheral blood, and umbilical cord blood.

Ficoll-Paque PLUS

Ficoll-Paque PLUS is an aqueous solution of density 1.077 ± 0.001 g/ml containing 5.7 g of Ficoll PM400 and 9 g of sodium diatrizoate with 0.0231 g of calcium disodium ethylenediamine-tetraacetic acid in every 100 ml. Ficoll PM400 is a synthetic high molecular weight (M_r 400 000) polymer of sucrose and epichlorohydrin which is readily soluble in water. The molecules of Ficoll PM400 are highly branched, approximately spherical, and compactly coiled with a Stokes' radius of about 10 nm. Ficoll PM400 has a low intrinsic viscosity (17 ml/g) compared with linear polysaccharides of the same molecular weight (cf. dextran M_r 400 000: η_i / 49 ml/g) and solutions of Ficoll PM400 have low osmotic pressures.

Sodium diatrizoate is a convenient compound to use with Ficoll PM400 since it forms solutions of low viscosity with high density. Sodium diatrizoate (M_r 635.92) is the sodium salt of 3,5-diacetamido-2,4,6-triiodobenzoic acid.



Since sodium diatrizoate is light-sensitive, Ficoll-Paque PLUS must be stored protected from light. The function of sodium diatrizoate in Ficoll-Paque PLUS is to provide the optimal density and osmolarity necessary for the efficient removal of other cells from the lymphocytes.

Ficoll-Paque PLUS is supplied as a sterile solution in a bottle with a rubber septum closure. To maintain sterility, aseptic techniques should be used when withdrawing solution and the rubber septum should not be removed. Ficoll-Paque PLUS should be stored between 4 and 30°C and protected from direct light. Storage of unopened bottles in the dark will increase the shelf-life. Deterioration of Ficoll-Paque PLUS is indicated by the appearance of a distinct yellow color or particulate material in the clear solution. Ficoll-Paque PLUS showing such deterioration should be discarded.

The separation principle

Lymphocyte isolation using Ficoll-Paque PLUS is based on methodology established through the extensive studies of Bøyum (1,2,3) and investigations carried out in our own laboratories. Separation media consisting of a mixture of Ficoll PM400 and an iodinated density gradient medium such as sodium diatrizoate have been widely used for purifying human lymphocytes following the publication of Bøyum's pioneering work in 1968.

For lymphocyte separation, defibrinated or anticoagulant-treated blood is diluted with an equal volume of balanced salt solution and layered carefully over Ficoll-Paque PLUS (without intermixing) in a centrifuge tube. After a short centrifugation at room temperature (typically at $400 g_{av}$ for 30 to 40 min) lymphocytes, together with monocytes and platelets, are harvested from the interface between the Ficoll-Paque PLUS and sample layers. This material is then centrifuged twice in balanced salt solution to wash the lymphocytes and to remove the platelets.

Several factors contribute to the success of this separation. On centrifugation, cells in the blood sample sediment towards the blood/Ficoll-Paque PLUS interface, where they come in contact with the Ficoll PM400 present in Ficoll-Paque PLUS. Red blood cells are efficiently aggregated by this agent at room temperature. Aggregation increases the rate of sedimentation of the red cells, which rapidly collect as a pellet at the bottom of the tube, where they are well separated from lymphocytes. Granulocytes also sediment to the bottom of the Ficoll-Paque PLUS layer. This process is facilitated by an increase in their densities caused by contact with the slightly hypertonic Ficoll-Paque PLUS medium. Thus, on completion of centrifugation, both granulocytes and red blood cells are found at the bottom of the tube, beneath the Ficoll-Paque PLUS.

Lymphocytes, monocytes, and platelets are not dense enough to penetrate into the Ficoll-Paque PLUS layer. These cells therefore collect as a concentrated band at the interface between the original blood sample and the Ficoll-Paque PLUS. This banding enables the lymphocytes to be recovered with high yield in a small volume with little mixing with the Ficoll-Paque PLUS medium. Washing and centrifuging the harvested cells subsequently removes platelets, any contaminating Ficoll-Paque PLUS and plasma. The resulting cell suspension then contains highly purified, viable lymphocytes and monocytes and is suitable for further studies.

A recommended standard method

Lymphocyte purification using Ficoll-Paque PLUS can be carried out over a wide range of blood sample volumes. With its high yield, this method can be adapted to the processing of very small amounts of blood, such as may be obtained from children. For maximum reproducibility of separation it is recommended that a standardized procedure be used. The following procedure has been evaluated in our laboratories and is recommended for separation of normal blood samples on Ficoll-Paque PLUS. Simple changes can easily be made to suit a particular centrifugation system.

To standardize the technique, blood volume and diameter of the centrifuge tube should be chosen first. These factors determine the height of the blood sample in the tube and consequently the centrifugation time. Increasing the height of the blood sample in the tube increases red cell contamination. The separation is, however, not appreciably affected by changing the diameter of the tube. Hence a larger volume can be separated with the same degree of purification in a tube of larger diameter if the height of the blood sample in the tube and the separation time are kept constant.

The yield and degree of purity of the lymphocytes depend to a considerable extent on the efficiency of red cell removal.

When erythrocytes in whole blood are aggregated, some lymphocytes are trapped in the clumps and therefore sediment with the erythrocytes. This tendency to trap lymphocytes is reduced by diluting the blood. Dilution gives a better lymphocyte yield and reduces the size of the red cell clumps. Aggregation of erythrocytes is enhanced at higher temperatures (37°C), which consequently decreases the yield of lymphocytes. At lower temperatures (4°C); however, the rate of aggregation is decreased but the time of separation is increased, which also decreases the yield of lymphocytes. A compromise temperature of 18 to 20°C gives optimal results.

Equipment and solutions required

1. Two 10 ml glass test-tubes for each blood sample to be processed. The test-tubes should be siliconized (see "Notes", page 11).
2. Balanced salt solution. At least 20 ml for each sample to be processed. The balanced salt solution may be prepared from two stock solutions, A and B.

Solution A

		Concentration (g/l)
Anhydrous D-glucose	5.5×10^{-3} M (0.1%)	1.0
CaCl ₂ ·2H ₂ O	5.0×10^{-5} M	0.0074
MgCl ₂ ·6H ₂ O	9.8×10^{-6} M	0.1992
KCl	5.4×10^{-3} M	0.4026
TRIS	0.145 M	17.565

Dissolve in approximately 950 ml of distilled water and add concentrated HCl until the pH is 7.6 before adjusting the volume to 1 l.

Solution B

		Concentration (g/l)
NaCl	0.14 M	8.19

To prepare the balanced salt solution, mix 1 volume of solution A with 9 volumes of solution B. Prepare the solution freshly each week. Other standard salt solutions may be used.

3. Pasteur pipettes (3 ml). One for each sample to be processed. These pipettes should be siliconized (see "Notes", page 11).
4. A low speed centrifuge.
5. Glass centrifuge tubes. Two centrifuge tubes for each blood sample to be processed. Internal diameter approximately 1.3 cm, volume 15 ml. The centrifuge tubes should be siliconized (see "Notes", page 11). For larger or smaller samples see "Notes", page 11.
6. Ficoll-Paque PLUS. 3 ml for each sample being processed. For larger or smaller samples see "Notes", p 11.
7. Syringe with needle. Needed for withdrawing Ficoll-Paque PLUS from the bottle under aseptic conditions.

Preparation of the sample

Fresh blood should be used to ensure high viability of isolated lymphocytes. Prepare the sample at 18 to 20°C.

1. To a 10 ml test-tube add 2 ml of defibrinated- or anticoagulant-treated blood and an equal volume of balanced salt solution (final volume 4 ml).
2. Mix by drawing the blood and the buffer in and out of a Pasteur pipette.

Procedure for isolation of lymphocytes

1. Remove the blue cap on the bottle of Ficoll Paque PLUS (Fig 1).
2. Invert the bottle of Ficoll-Paque PLUS several times to ensure mixing. Using the syringe with needle attached, pierce the septum and withdraw the required volume of

Ficoll-Paque PLUS (3 ml for each centrifuge tube) from the inverted bottle (Fig 2). If this method is employed, each bottle will deliver at least 100 ml of Ficoll-Paque PLUS.

3. Add Ficoll-Paque PLUS (3 ml) to the centrifuge tube.
4. Carefully layer the diluted blood sample (4 ml) onto the Ficoll-Paque PLUS (Fig 3).
Important. When layering the sample do not mix the Ficoll-Paque PLUS and the diluted blood sample.
5. Centrifuge at 400 g_{av} for 30 to 40 min at 18 to 20°C.
6. Draw off the upper layer using a clean Pasteur pipette, leaving the lymphocyte layer undisturbed at the interface (Fig 4 and Fig 5). Care should be taken not to disturb the lymphocyte layer. The upper layer, which contains the plasma, may be saved for later use.

Fig 1.



Fig 2.



Fig 3.

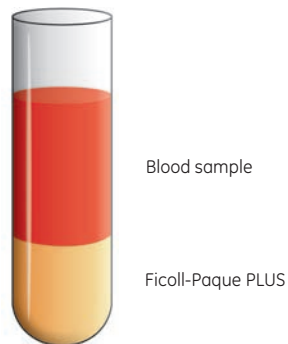


Fig 4.

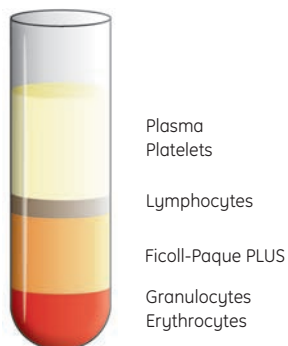
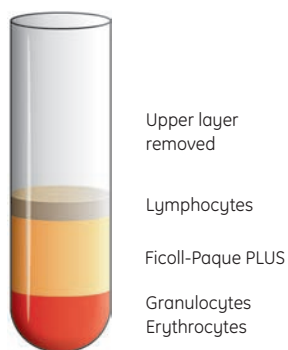


Fig 5.



Washing lymphocytes free of platelets

1. Using a clean Pasteur pipette transfer the lymphocyte layer to a clean centrifuge tube. It is critical to remove all the material at the interface but in a minimum volume. Removing excess Ficoll-Paque PLUS causes granulocyte contamination; removing excess supernatant results in platelet contamination.
2. Add at least 3 volumes (6 ml) of balanced salt solution to the lymphocytes in the test-tube.
3. Suspend the cells by gently drawing them in and out of a Pasteur pipette.
4. Centrifuge at 60 to 100 g_{av} for 10 min at 18 to 20°C.
5. Discard the supernatant.
6. Suspend the lymphocytes in 6 to 8 ml of balanced salt solution by gently drawing them in and out of a Pasteur pipette.
7. Centrifuge at 60 to 100 g_{av} for 10 min at 18 to 20°C.
8. Discard the supernatant. The lymphocytes should now be suspended in the medium appropriate to the application.

Typical results from our laboratories

- Lymphocytes: 60 \pm 20% recovery of lymphocytes from the original blood sample
95 \pm 5% of cells present in the lymphocyte fraction are mononuclear leukocytes
> 90% viability (measured by trypan blue exclusion)
- Other cells: 3 \pm 2% granulocytes
5 \pm 2% erythrocytes
< 0.5% of the total platelet content of the original blood sample

Notes

Preparation of glassware: All glassware that comes in contact with the sample should be siliconized before use. Glassware should be immersed in a 1% silicone solution for 10 s (where no specific coating procedure is recommended by the manufacturer), washed thoroughly with distilled water and dried in an oven. The best siliconizing fluids are those based on dimethyldichlorosilane dissolved in an organic solvent.

Alternatively, tissue culture plasticware may be used.

Anticoagulants: Heparin, EDTA, citrate, acid citrate dextrose (ACD), and citrate phosphate dextrose (CPD) may be used as anticoagulants for the blood sample. Defibrinated blood requires no anticoagulant. Defibrination, however, results in a lower lymphocyte yield and may cause increased contamination by red cells (3). It also causes selective loss of monocytes. Bøyum has found that a slightly purer lymphocyte preparation is obtained using EDTA instead of heparin as anticoagulant (3). It has also been noted in the purification of lymphocytes from sources other than peripheral blood that addition of heparin may cause gelling of cell suspensions (4).

Larger blood samples: Larger volumes of blood may be processed with the same efficiency of separation by using centrifuge tubes of increased diameter while maintaining approximately the same heights of Ficoll-Paque PLUS (2.4 cm) and blood sample (3.0 cm) as in the standard method described above. Increasing the tube diameter does not affect the separation time required.

Smaller blood samples: Smaller volumes of blood can be processed rapidly by a modification of the method described by Bøyum (5).

Sample storage: Blood samples should be processed as soon as possible after collection to ensure optimal results. Storage for 24 h at room temperature has been reported to result in reduced lymphocyte yield, altered expression of surface markers, and reduced response to mitogenic stimulation (6).

Pathological blood samples: The standard method described above has been developed for the purification of lymphocytes from peripheral blood of normal, healthy, human donors. Different results may be obtained with samples taken from donors with infections or other pathological conditions, such as cancer (see "Further applications of Ficoll-Paque PLUS", page 13).

Platelet removal: The washing procedure described in this standard method will give efficient removal of platelets from the lymphocytes in the majority of cases. If difficulty is experienced, centrifugation through a 4 to 20% sucrose gradient layered over Ficoll-Paque PLUS may be used to remove platelets (7). Alternatively, the platelets may be removed by aggregation with adenosine-5'-diphosphate (ADP) before separating the lymphocytes (8).

Troubleshooting inadequate performance

If used according to the recommended standard procedure, Ficoll-Paque PLUS may be expected to give trouble-free isolation of human peripheral blood lymphocytes with results as shown under "Typical results from our laboratories", page 10. However, deviations in certain experimental parameters may lead to poor results and the troubleshooting chart given here is intended to assist in the rapid identification and correction of the problem causing reduced performance.

Deviation in performance	Likely source of problem	Comments
Increased red blood cell and contamination of the lymphocytes.	A. Temperature too low.	The density of Ficoll-Paque PLUS is greater at low temperature and red blood cells are aggregated less well, so granulocytes and red blood cells are prevented from entering the Ficoll-Paque PLUS layer. Raise the temperature to 18 to 20°C.
	B. Centrifugation speed too slow and/or centrifugation time too short.	Adequate time and g-force must be used to ensure complete sedimentation of non-lymphoid cells.
Low yield and viability of lymphocytes.	Temperature too high.	Ficoll-Paque PLUS is less dense at high temperature and some lymphocytes may penetrate into the Ficoll-Paque PLUS layer. Cell viability may also be affected. Reduce the temperature to 18 to 20°C.
Low yield of lymphocytes with normal viability.	Blood not diluted 1:1 with balanced salt solution; unusually high hematocrit.	The high cell density results in large numbers of lymphocytes being trapped by red blood cell aggregates. Dilute the blood sample further.
Low yield of lymphocytes with increased granulocyte contamination.	Vibration of the centrifuge rotor, leading to stirring of the gradient.	Vibration may cause broadening of the lymphocyte band and mixing with the underlying cells. Check that the rotor is properly balanced. Choose rotor speed to avoid natural resonant frequencies.
Low yield of lymphocytes, low viability, and contamination by other cell types.	Sample contains cells with abnormal densities; densities different from those in normal human blood.	May be encountered with pathological blood samples, non-human blood samples, or samples from sources other than peripheral blood. Percoll™, a medium for density gradient centrifugation, may be more suitable than Ficoll-Paque PLUS for such separations.

Properties of lymphocytes isolated by the Ficoll-Paque PLUS method

Since its introduction in 1968, the lymphocyte separation method described by Bøyum (1,2) has been used in numerous immunological investigations. This widespread adoption indicates the superior results obtained with this technique and its freedom from impairment of lymphocyte function. Nevertheless, certain effects of the separation procedure have been seen and these are noted below, since research situations may arise in which they are of significance.

Separation with Ficoll-Paque PLUS has been reported to lead to adsorption of cytophilic IgG to the mononuclear leukocytes (9), resulting in erroneously high estimates of the number of Ig-bearing lymphocytes and too low estimates of the number of cells bearing F_c receptors. This interference can be avoided by washing the blood cells with balanced salt solution before isolation, thus removing the IgG present in the plasma that gives rise to these artifacts.

Selective loss of a population of lymphocytes that form rosettes with autologous red blood cells has been reported to occur using the standard procedure (10,11) and evidence was found that this is the result of a specific lymphocyte-red blood cell interaction, not a non-specific trapping (11). This population was found to account for about 6% of the lymphocytes initially present in the blood sample and could be recovered almost quantitatively by resuspending the red cell pellet in medium and recentrifuging over a gradient of slightly higher density than normal (i.e. 1.083 g/ml) (11).

Lymphocytes separated by the Bøyum procedure have been reported (12) to show enhanced stimulation in mixed lymphocyte cultures as compared with lymphocytes in "leukocyte-rich plasma" (not exposed to Ficoll-Paque PLUS). This enhanced reaction was postulated to depend at least partially on the removal in the Ficoll-Paque PLUS method of neutrophils that appear otherwise to have a suppressive effect on the mixed lymphocyte reaction (12). Ficoll-Paque PLUS-separated lymphocytes have also been reported to show increased levels of "spontaneous" blastogenesis, as measured by ^3H -thymidine incorporation in cultures not stimulated by mitogens, but the cause of this enhancement was not established (13). Diminished response of Ficoll-Paque PLUS-separated lymphocytes to mitogenic stimulation by phytohaemagglutinin (PHA) as compared to lymphocytes prepared by centrifugal elutriation has been reported in one instance (14).

Further applications of Ficoll-Paque PLUS

A great many modifications and extensions of the method have come into use following the introduction of the technique described by Bøyum in 1968 and its subsequent widespread adoption. For example, monocytes (which are recovered in the lymphocyte fraction, using the standard procedure described in this booklet) can be removed, if desired, by incubating the blood sample with iron (or iron carbonyl) before separation on Ficoll-Paque PLUS. The monocytes phagocytose the iron particles and become denser, with the result that they sediment through the Ficoll-Paque PLUS layer on centrifugation and collect in the red blood cell pellet at the bottom of the tube (3).

An important and widely used extension of the original technique is its application, in combination with selective rosetting (clustering), to the isolation of lymphocyte subclasses. In the most often used case, the purified lymphocytes obtained by the standard procedure (with or without monocyte removal) are incubated with an excess of sheep red blood cells (ratio of red blood cells to lymphocytes at least 50:1), whereupon the T lymphocytes spontaneously form rosettes with the sheep red blood cells. On centrifugation for a second time over Ficoll-Paque PLUS, the T lymphocyte rosettes sediment to the bottom of the tube together with the excess red blood cells, leaving the other (non-rosetting) lymphocytes at the interface (3).

Such techniques for the separation of lymphocyte subclasses, as well as the standard method for isolating the entire lymphocyte population, have been widely applied to studies of lymphocyte functions and surface markers in disease states as compared to normal controls. For such comparative studies it is important that the lymphocyte purification method should not lead to preferential enrichment or loss of any particular lymphocyte subclass. Evidence that the standard Ficoll-Paque PLUS procedure is free from this kind of distortion has been presented by Häyry *et al.* (15), although the existence of the minor subset of autologous rosette-forming lymphocytes described by Hokland and Heron (10) was not recognized in the earlier work. Caution is, however, necessary in applying the Ficoll-Paque PLUS technique to pathological blood specimens, since it has been found that the resulting lymphocyte layer may be contaminated with immature granulocytes in patients with certain infections (16), and particularly cancer (17,18). In the latter case, elevated numbers of monocytes may also be present (19). However, in a study of immunocompromised patients with aplastic anemia or acute leukemia, lymphocyte isolation proceeded normally using Ficoll-Paque PLUS and resulted, in combination with purification of granulocytes from the red blood cell pellet by dextran sedimentation, in substantially increased rates of virus recovery from the blood samples (20).

Ficoll-Paque PLUS has been used with success to separate cells from a variety of sources other than peripheral blood, even though its properties have been optimized specifically for blood lymphocyte isolation. Thus, separation over Ficoll-Paque PLUS facilitated detection and identification of malignant cells in abdominal and pleural fluids (21) and similar conclusions have been drawn using Ficoll-Paque PLUS mixtures of densities other than 1.077 g/ml (22,23). Separation on Ficoll-Paque PLUS has also been reported to assist in establishing cultures of amniotic fluid cells and to facilitate their subsequent cytogenetic analysis (24).

Ficoll-Paque PLUS can also be used to isolate lymphocytes from species other than man. In some cases (e.g. cow, goat, and rabbit) it may be necessary to alter the standard procedure to achieve good results (3) and it should be remembered that the density of Ficoll-Paque PLUS (1.077 g/ml), although optimized for the isolation of human lymphocytes, may not give optimal yield and purity of lymphocytes from other species. However, isolation methods using Ficoll-Paque PLUS of standard density have been described for mouse (25), dog (26), monkey (27), cow (28,29), rabbit (30), horse (31), pig (31,32), and even fish (33) lymphocytes. Where it is desired to work with solutions of densities other than 1.077 g/ml it may be convenient to use the alternative centrifugation medium Percoll (a handbook describing methods and applications of Percoll density gradient media is available on request) since iso-osmotic solutions of different densities are very easily prepared with this medium, facilitating the optimization of a particular separation. Separation with Percoll has also been reported to give improved lymphocyte yields and purities in some cases (34–36).

Availability and storage

Ficoll-Paque PLUS is available in packs of 6 × 100 ml (Code No. 17-1440-02) and 6 × 500 ml (Code No. 17-1440-03) as a sterile, ready to use liquid in glass bottles with rubber septum caps. Full instructions for use are included with each pack. Ficoll-Paque PLUS should be stored between 4 and 30°C protected from light, under which conditions it will maintain sterility and stability for 3 y. Storage in the cold will prolong shelf-life. Freezing of this product is not recommended, but if frozen accidentally, the bottle should be inverted several times after thawing to ensure a homogeneous solution.

ISO 13485:2003 and GMP compliant Ficoll-Paque PREMIUM

Ficoll-Paque PREMIUM is a density gradient medium* used for the preparation of human mononuclear cells. Based on Ficoll-Paque PLUS, it was developed for both large- and small-scale purification of mononuclear cells from human peripheral blood using a simple and rapid centrifugation technique developed by Bøyum (1).

Ficoll-Paque PREMIUM differs from Ficoll-Paque PLUS in that it is manufactured in a strictly controlled environment compliant with ISO 13485:2003 and GMP (Good Manufacturing Practice) (37), and in accordance with the recommendations of the United States Pharmacopeia (38) for the manufacture of cell therapy products. ISO 13485 and GMP compliance requires stringency in validation and documentation of manufacturing procedures



Ficoll-Paque PREMIUM offers the following benefits:

- Manufactured according to GMP and ISO standards
- Manufactured in accordance to USP <1043> recommendations for ancillary materials
- Sterile, ready to use reagent
- Low levels of endotoxin (< 0.12 EU/ml) secured and tested
- Osmolality tested

* For *in vitro* use only.

Applications

Ficoll-Paque PREMIUM is optimized for the isolation of mononuclear cells from human peripheral blood. In addition the medium can be adapted for the isolation of human mononuclear cells from other sources including umbilical cord blood and bone marrow. Separation of normal human peripheral blood by the recommended protocol typically yields a mononuclear cell preparation with:

- 95 ± 5% of cells present in the separated fraction are mononuclear cells
- 90% viability of the separated cells
- 60 ± 20% recovery of the mononuclear cells present in the original blood sample
- 3 ± 2% granulocytes
- 5 ± 2% red blood cells
- < 0.5% of the total platelets of the original blood sample

Specifications

Ficoll-Paque PREMIUM consists of a mixture of Ficoll PM400 and sodium diatrizoate at a density of 1.077 g/ml, which is optimized for the isolation of mononuclear cells from human peripheral blood. Ficoll-Paque PREMIUM is sterile and stable for at least 3 y under the recommended storage conditions.

Density	1.077 + 0.001 g/ml
Stability	Stable for 3 y if stored between 4 and 30°C and protected from direct light
Endotoxins	Contains < 0.12 EU/ml
Osmolality	288–310 mOsm/kg

Full instructions for use are included with each pack.

Availability and storage

Ficoll-Paque PREMIUM is available in packs of 6 × 100 ml and 6 × 500 ml as a sterile, ready to use liquid in glass bottles with rubber septum caps.

Ficoll-Paque PREMIUM should be stored between 4 and 30°C and protected from light, under which conditions it will maintain sterility and stability for 3 y. Storage in the cold will prolong shelf-life. Freezing of this product is not recommended, but if frozen accidentally, the bottle should be inverted several times after thawing to ensure a homogeneous solution.

References

1. Isolation of mononuclear cells and granulocytes from human blood. (Paper IV). Bøyum, A. *Scand J Clin Lab Invest 21 Suppl*, **97**, 77–89 (1968).
2. Isolation of leucocytes from human blood - further observations. (Paper II). Bøyum, A. *Scand J Clin Lab Invest 21 Suppl*, **97**, 31–50 (1968).
3. Isolation of lymphocytes, granulocytes and macrophages. Bøyum, A. *Scand J Immunol 5 Suppl*, **5**, 9–15 (1976).
4. Gel formation with leucocytes and heparin. Almeida, A.P., Beaven, M.A. *Life Sci*, **26**, 549–555 (1980).
5. Tissue typing using a routine one-step lymphocyte separation procedure. Harris, R., Ukaejiofo, E.O. *Brit J Haematol*, **18**, 229–235 (1970).
6. Altered lymphocyte markers and blastogenic responses associated with 24 hour delay in processing of blood samples. Kaplan, J., Nolan, D., Ree, A. *J Immunol Methods*, **50**, 187–191 (1982).
7. Purification of lymphocytes and platelets by gradient centrifugation. Perper, R.J., Zee, T.W., Mickelson, M.M. *J Lab Clin Med*, **72**, 842–848 (1968).
8. Platelet aggregation technique used in the preparation of lymphocyte suspensions. Vives, J., Parra, M., Castillo, R. *Tissue Antigens*, **1**, 276–278 (1971).
9. Quantitation of F_c receptors and surface immunoglobulin is affected by cell isolation procedures using Plasmagel and Ficoll-Hypaque. Alexander, E.L., Titus, J.A., Sega, D.M. *J Immunol Methods*, **22**, 263–272 (1978).
10. Analysis of the lymphocyte distribution during Isopaque-Ficoll isolation of mononuclear cells from human peripheral blood. Hokland, P., Heron, I. *J Immunol Methods*, **32**, 31–39 (1980).
11. The Isopaque-Ficoll method re-evaluated: Selective loss of autologous rosette-forming lymphocytes during isolation of mononuclear cells from human peripheral blood. Hokland, P., Heron, I. *Scand J Immunol*, **11**, 353–356 (1980).
12. Reactivity in mixed cultures of mononuclear leucocytes separated on Ficoll-Hypaque. Bain, B., Pshyk, K. *Proceedings 7th Leucocyte Culture Conference*, (Ed. Daguillard, F.) *Academic Press*, New York, 29–37 (1973).
13. Effect of Ficoll-Hypaque separation on activation and DNA synthesis of human blood lymphocytes. Farnes, P., Barker, B.E. In: *Regulatory Mechanisms in Lymphocyte Activation*, (Ed. Lucas, D.O.) *Academic Press*, New York, 368–370 (1977).
14. Comparison of lymphocyte function after isolation by Ficoll-Hypaque flotation or elutriation. Berger, C.L., Edelson, R.L. *J Invest Dermatol*, **73**, 231–235 (1979).
15. Lack of subclass selection during density purification of human lymphocytes. Häyry, P., Tötterman, T.H., Ranki, A. *Clin Exp Immunol*, **28**, 341–346 (1977).
16. Special requirements for isolation of purified lymphocyte populations in infected patients. Dougherty, P.A., Balch, C.M. *Fed Proc*, **40**, 1120 (1981).
17. Changes in Ficoll-Hypaque gradients with advancing stage of lung cancer. Check, I.J., Hunter, R.L. *Fed Proc*, **38**, 1224 (1979).

18. Contamination of mononuclear cell suspensions obtained from cancer patients by the Bøyum method. Currie, G.A., Hedley, D.W., Nyholm, R.E., *et al.* *Brit J Cancer*, **38**, 555–556 (1978).
19. Non-lymphoid cells obtained by the Bøyum technique and their significance in cancer patients. Kluijn-Nelemans, J.C., van Helden, H.P.T. *J Clin Lab Immunol*, **4**, 99–102 (1980).
20. Comparison of rates of virus isolation from leukocyte populations separated from blood by conventional and Ficoll-Paque/Macrodex methods. Howell, C.L., Miller, M.J., Martin, W.J. *J Clin Microbiol*, **10**, 533–537 (1979).
21. Gradient separation of normal and malignant cells. II. Application to *in vivo* tumour diagnosis. Minami, R., Yokota, S., Teplitz, R.L. *Acta Cytol*, **22**, 584–588 (1978).
22. A quick method for concentration and processing cancer cells from serous fluids and fine-needle nodule aspirates. Elequin, F.T., Muggia, F.M., Ghossein, N.A., *et al.* *Acta Cytol*, **21**, 596–599 (1977).
23. The comparative diagnostic accuracy of cancer-cell detection obtained with Ficoll-Hypaque gradient separation and standard centrifugation technics on body-cavity fluids. Katz, R.L., Lukeman, J.M. *Amer J Clin Pathol*, **74**, 18–24 (1980).
24. Enhancement of human amniotic cell growth by Ficoll-Paque gradient fractionation. Chang, H.-C., Jones, O.W., Bradshaw, C., *et al.* *In Vitro*, **17**, 81–90 (1981).
25. A simple method for the isolation of murine peripheral blood lymphocytes. Chi, D.S., Harris, N.S. *J Immunol Methods*, **19**, 169–172 (1978).
26. Isolation of various canine leucocytes and their characterization by surface marker analysis. Ho, C.K., Babiuk, L.A. *Immunol*, **35**, 733–740 (1978).
27. Lymphocyte isolation, rosette formation, and mitogen stimulation in rhesus monkeys. Taylor, D.W., Marchette, N.J., Siddiqui, W.A. *Develop Comp Immunol*, **2**, 539–546 (1978).
28. The bovine lymphoid system: Binding and stimulation of peripheral blood lymphocytes by lectins. Pearson, T.W., Roelants, G.E., Lundin, L.B., *et al.* *J Immunol Methods*, **26**, 271–282 (1979).
29. Acid α -naphthyl acetate esterase: presence of activity in bovine and human T and B lymphocytes. Yang, T.J., Jantzen, P.A., Williams, L.F. *Immunol*, **38**, 85–93 (1979).
30. Humoral and formed elements of blood modulate the response of peripheral blood monocytes. I. Plasma and serum inhibit and platelets enhance monocyte adherence. Musson, R.A., Henson, P.M. *J Immunol*, **122**, 2026–2031 (1979).
31. Comparative study of six methods for lymphocyte isolation from several mammalian sources and determination of their carbohydrate composition. Hueso, P., Rocha, M. (Article in Spanish) *Rev Esp Fisiol*, **34**, 339–344 (1978).
32. Separation of porcine blood cells by means of Ficoll-Paque. Wittman, G. (Article in German) *Zbl Vet Med B*, **27**, 253–256 (1980).
33. A comparison of the methods used for the separation of fish lymphocytes. Blaxhall, P.C. *J Fish Biol*, **18**, 177–181 (1981).
34. Separation of human peripheral blood monocytes on continuous density gradients of Polyvinylpyrrolidone-coated silica gel (Percoll). Brandslund, I., Møller-Rasmussen, J., Fisker, D., *et al.* *J Immunol Methods*, **48**, 199–211 (1982).
35. Efficient separation of human T lymphocytes from venous blood using PVP-coated colloidal silica particles (Percoll). Feucht, H.E., Hadam, M.R., Frank, F., *et al.* *J Immunol Methods*, **38**, 43–51 (1980).

36. An improved technique for the isolation of lymphocytes from small volumes of peripheral mouse blood. Mizobe, F., Martial, E., Colby-Germinario, S., *et al.* *J Immunol Methods*, **48**, 269–279 (1982).
37. EC Guide to GMP (Good Manufacturing Practice), annex 1 “Manufacture of Sterile Medicinal Products.
38. United States Pharmacopeia. *Recommendations for ancillary materials*, chapter <1043>.

Ordering Information

Selected products for cell science from GE Healthcare

Product		Quantity	Code no.
Ficoll-Paque PREMIUM	A density gradient medium manufactured in a GMP-compliant environment and certified to ISO 13485 standard; intended for the preparation of stem cells from blood and bone marrow for clinical applications.	6 × 100 ml	17-5442-02
		6 × 500 ml	17-5442-03
Ficoll-Paque PLUS	A density gradient medium for <i>in vitro</i> isolation of lymphocytes from whole human peripheral blood.	6 × 100 ml	17-1440-02
		6 × 500 ml	17-1440-03
Ficoll PM400	A hydrophilic polymer of high molecular weight for density gradient centrifugation.	100 g	17-0300-10
		500 g	17-0300-50
Percoll	A density gradient centrifugation medium for the isolation of cells, subcellular particles, and viruses.	250 ml	17-0891-02
		1 l	17-0891-01
Percoll PLUS	A silane-coated, silica-based medium for the isolation of various cell types for clinical research applications.	250 ml	17-5445-02
		1 l	17-5445-01
Density Marker Beads	Small colored beads of accurately known densities, for calibration of density gradients of Percoll and Percoll PLUS.	10 vials	17-0459-01
Protein A Sepharose 6MB	For separation of cells by affinity chromatography.	10 ml	17-0469-01
CNBr Activated Sepharose 6MB	For separation of cells by affinity.	15 g	17-0820-01
Cytodex™ 1	Microcarriers for cell culture.	25 g	17-0448-01
Cytodex 3	Microcarriers for cell culture.	10 g	17-0485-01

These and other products are available in the GE Healthcare Products for Life Sciences catalog and in individual technical booklets, which are available free on request.

For local office contact information,
please visit www.gelifesciences.com/contact

GE Healthcare Bio-Sciences AB
Björkgatan 30
751 84 Uppsala
Sweden

www.gelifesciences.com/cellprep

GE, imagination at work, and GE monogram are trademarks of General Electric Company.

Ficoll, Ficoll-Paque, Percoll, Sepharose, and Cytodex are trademarks of GE Healthcare Companies.

Percoll PLUS is protected by the following patents and equivalent patents and patent applications in other countries, which are licensed to GE Healthcare from Dendreon Corporation: US patent number 4,927,749, US patent number 4,927,750, Canadian patent number 1,338,492, Japanese patent number 2,628,509, US patent number 5,789,148, US patent number 6,015,843 and European patent number 1,047,635. A free, non-transferable license to use this product for density gradient separation purposes under the above mentioned patent rights accompanies the purchase of the product from a GE Healthcare company and its licensed distributors, but any use of Percoll PLUS or any other organosilanized colloidal silica particle-based separation media to enrich, purge or isolate cells for active immunotherapy for oncology applications shall be excluded from such license.

All third party trademarks are the property of their respective owners.

© 1983–2007 General Electric Company—All rights reserved.

Previously published June 1983

All goods and services are sold subject to the terms and conditions of sale of the company within GE Healthcare which supplies them. A copy of these terms and conditions is available on request. Contact your local GE Healthcare representative for the most current information.

GE Healthcare UK Ltd
Amersham Place
Little Chalfont
Buckinghamshire, HP7 9NA, UK

GE Healthcare Bio-Sciences Corp
800 Centennial Avenue
P.O. Box 1327
Piscataway, NJ 08855-1327, USA

GE Healthcare Europe GmbH
Munzinger Strasse 5,
D-79111 Freiburg, Germany

GE Healthcare Bio-Sciences KK
Sanken Bldg. 3-25-1, Hyakunincho
Shinjuku-ku, Tokyo 169-0073, Japan



imagination at work